



Madeira Grove, Woodford Green, IG8

BUTLER  STAG



**Welcome to Chantal Court, this exclusive development comprises ten meticulously crafted luxury apartments, each an epitome of sophistication and style. Nestled within a stone's throw of Woodford's Central Line station, Chantal Court seamlessly blends modern elegance with timeless charm, offering residents an unmatched lifestyle experience.**



## **Leasehold**

## **Price Guide £325,000**

Situated just a stone's throw from Woodford Central Line Station, there is something for everyone within this exclusive development with its mixture of spacious, one and two-bedroom apartments.

The interior spaces are defined by LVT flooring, two-toned kitchen units, and veined quartz work surfaces which add visual excitement and depth to the room.

Each apartment enjoys custom-built kitchen cabinetry which embraces a sense of timeless style and functionality, making it an enduring design that fits perfectly for this brand-new building. All kitchens have top-of-the-range Zanussi integrated appliances that provide all the features necessary to accommodate a contemporary lifestyle for the new owner.

The bathrooms exude sophistication and comfort with spa-like retreat qualities where functionality and aesthetics have come together to provide a relaxing place to be. Large format textured grey tiles line both the floor and walls providing hallmark qualities of a modern bathroom. All concealed taps, shower valves, and shower heads are sleek in design and have a chrome finish. Wall-hung toilets and basins are a running theme as are the spacious walk-in showers with glass enclosures that provide a functional space.

All of the apartments within Chantal Court have their own private outdoor space but none more so than plots 2 and 3 which both boast lawned landscaped gardens. This new development offers a popular urban location whilst being surrounded by wide-open green spaces, yet still providing access to central London within a short train or car journey.

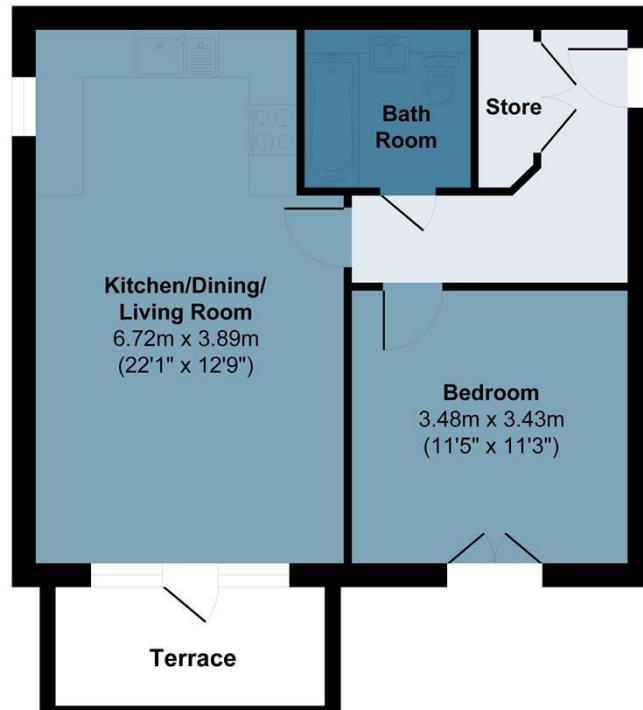
All apartments offer bedrooms large enough for a double bed and plenty of space to spare for wardrobes.



## Flat 1 Chantal Court

Approx. Gross Internal Area 51.0 sq M ( 549 sq Ft)

**BUTLER & STAG**



**Ground Floor**

Measurements are approximate and for illustration purposes only. While we do not doubt the accuracy and completeness, we advise you conduct independent assessment of the property to determine monetary value.  
© @ modephoto.uk www.modephoto.co.uk

Prepared on behalf of Butler & Stag  
Land and New Homes

If you have any further questions  
please don't hesitate to contact us on  
the details below

**BUTLER & STAG**

☎ 020 4542 2999

🏠 12 Coppice Row Theydon Bois, Essex, CM16 7ES

✉ enquires@butlerandstag.com

[www.butlerandstag.uk](http://www.butlerandstag.uk)

IMPORTANT NOTICE - These particulars have been prepared in good faith and they are not intended to constitute part of an offer or contract. We have not performed a structural survey on this property and the services, appliances and specific fittings have not been tested. All photographs, measurements, floor plans and distances referred to are given as a guide and should not be relied upon.